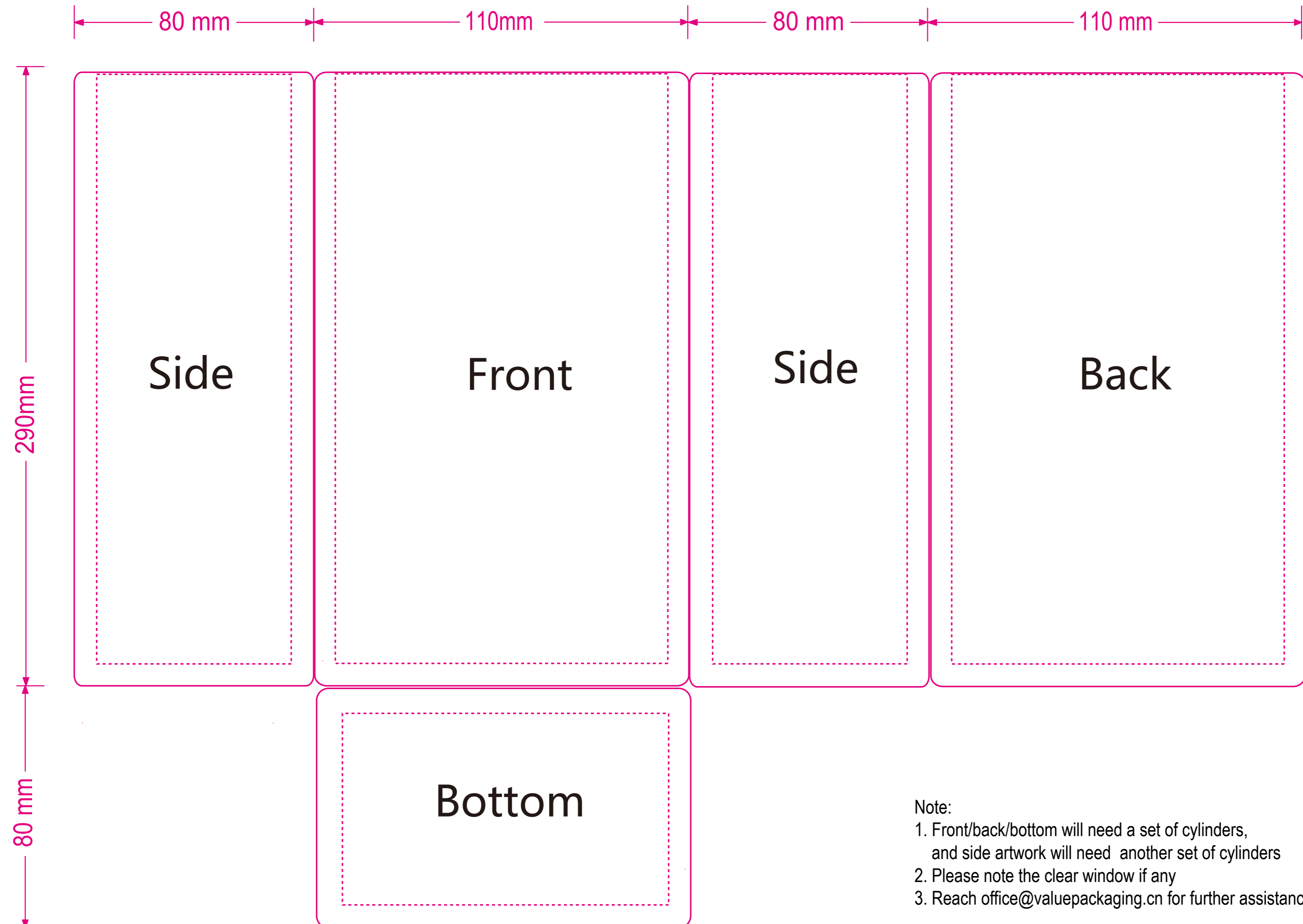


1 pound compostable square bottom coffee pouch
W110*H290mm
Materials:
Brown Kraft 70g/Metallized Cellulose/PLA+PBAT Foil Structure
Edge Seal: 8mm

CopyRight:
Qingdao Tongli Packaging Products Co., Ltd
Whatsapp: +86 159 6981 3136
Email: office@valuepackaging.cn
Web: www.valuepackaging.cn/
Reach us if you have any questions



Note:

1. Front/back/bottom will need a set of cylinders, and side artwork will need another set of cylinders
2. Please note the clear window if any
3. Reach office@valuepackaging.cn for further assistance if any questions.